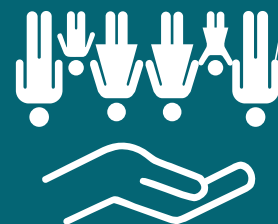


The open source tool for digitalization of health financing



COUNTRIES CURRENTLY IMPLEMENTING openIMIS

Universal Health Coverage (UHC) and Universal Social Protection (USP)

A growing number of countries worldwide are working towards both UHC and USP for their populations.

openIMIS is a practical tool to help achieve this vision. It contributes to advancing the 2030 Agenda, which pledges to “Leave no one behind”.

Key Facts

- openIMIS is licensed as open source: it is free to download, customize and use by anyone.
- Data is only accessible and owned by the administering institution.
- The software can be run offline.
- openIMIS is a global good. It is supported and constantly improved by a global community.

Meet the openIMIS initiative

- We drive the software development process.
- We provide technical assistance and best practices from different countries using openIMIS.
- We promote open access to technical documentation, demos and training materials.
- We welcome interested institutions, supporting agencies, software developers and academia.

The initiative is **funded** by the **Swiss** and **German development cooperation agencies**. The coordination desk is hosted by GIZ.

Interested – what next?

► [Check out our resources online](#)

► [Reach out to the openIMIS initiative](#)



www.openimis.org

[@openIMIS](https://twitter.com/openIMIS)

contact@openimis.org



For more information about openIMIS, scan our QR code to visit our website!



What is openMIS?

openMIS is an open-source software which helps manage health financing processes.

It provides digital processes for registration of individuals, for keeping records of provided health services and for claims administration.

The benefits:

- Free open-source software
- Automated claims processing
- Digitized paperwork
- Improved data management

1 ENROLMENT



Household or individual



Registration on paper or openMIS app



Data saved on local server

2 HEALTH SERVICE



Patient visits health facility



Patient verification or registration in the database



Patient treatment



Services entered into openMIS claim form

3 CLAIMS MANAGEMENT



Health facility submits claims via openMIS to payer institutions



Reviewer checks claims and decides: accept or reject



Payer initiates payment to health facility

4 MONITORING AND REPORTING



Who should use openMIS?

The users of openMIS are institutions that subsidize health care, such as health insurance funds or ministries of health.

openMIS helps manage:

- Membership/ patient registries
- Benefit packages (services and prices)
- Contracted providers
- Service claims and reimbursement
- Client feedback
- Monitoring and reporting

Strategic purchasing for UHC

openMIS is flexible and customizable for health systems moving towards Universal Health Coverage (UHC) and strategic purchasing of services.

By linking patient and provider data, it facilitates the flow and processing of digital information.

openMIS can be used for:

- Health insurance schemes
- National health systems (tax funded)
- Voucher schemes