



open**IMIS**

A tool for managing business processes in Health and Social Protection

22.04.2021

Saurav Bhattarai

Introduction to openIMIS

- The success of health financing/social protection schemes depend on highly efficient implementation of multiple, complex business processes.
- Scheme operators in low- and middle-income countries struggle to achieve efficiencies in these schemes when they lack access to appropriate digital technologies.
 - Build own IT system
 - Buy commercial
 - Use opensource ?

What is openIMIS?

openIMIS is an

- **open source software for managing social protection processes.** It helps digitizing the link between beneficiaries, providers and payers for social protection.

It is **supported by a**

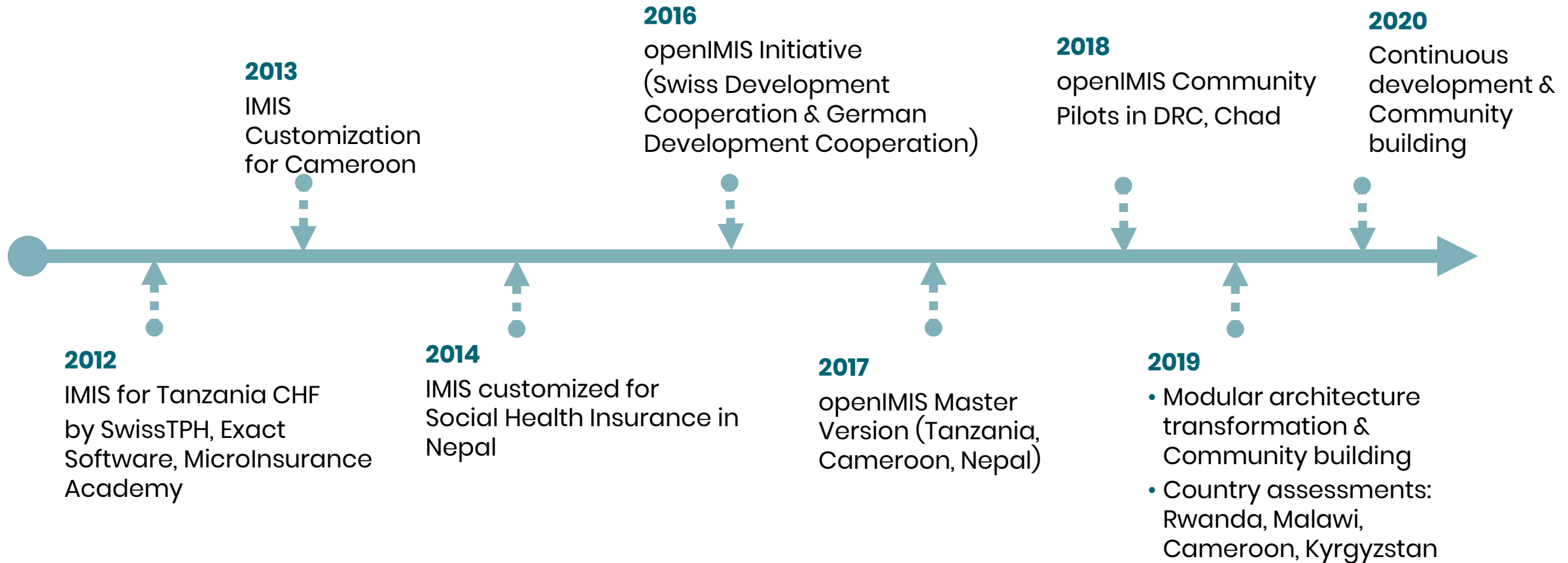
- community of developers, users and implementers

With the **joint mission to**

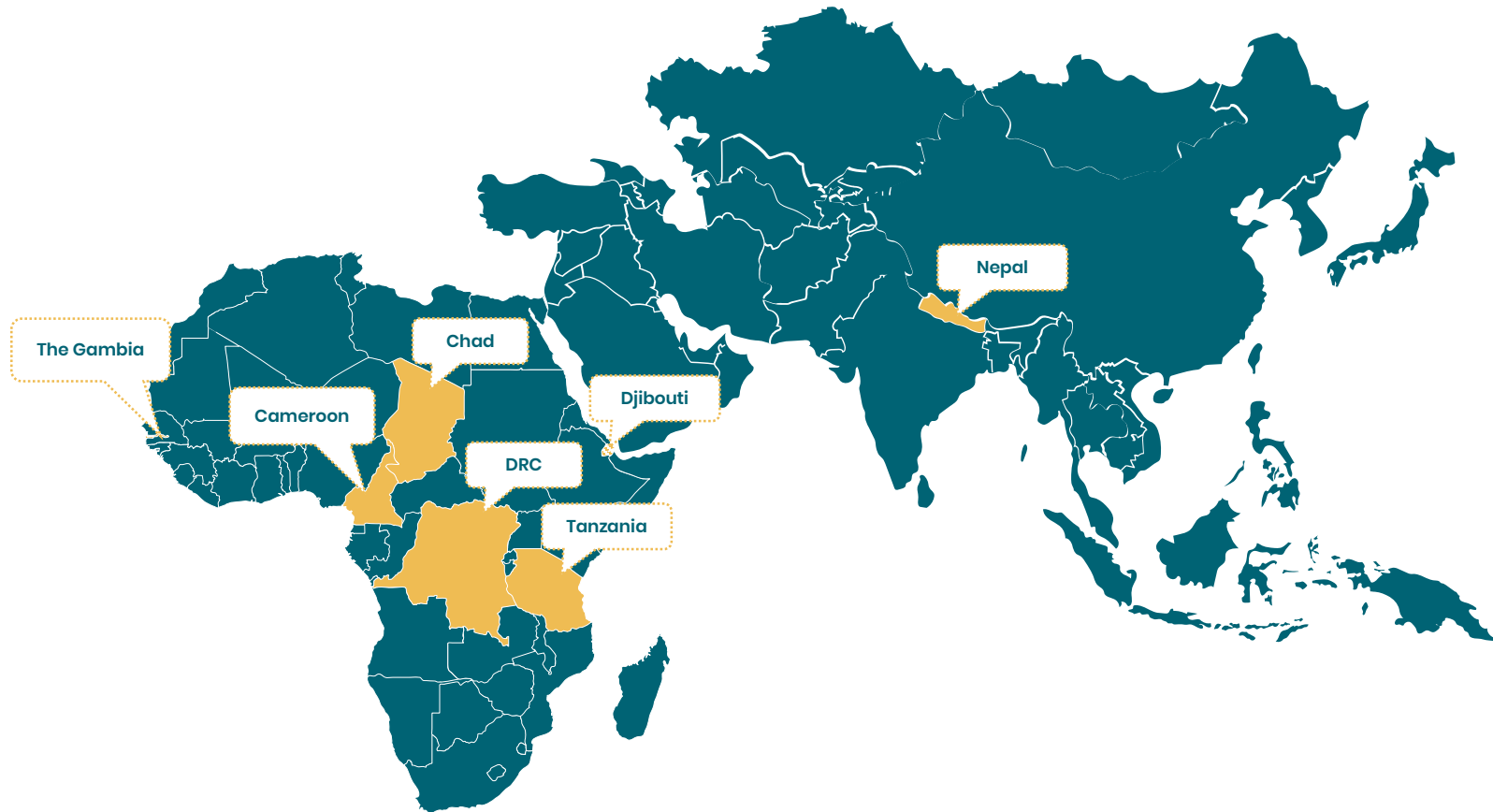
- Increase and improve access to universal health coverage (UHC) and universal social protection (USP)



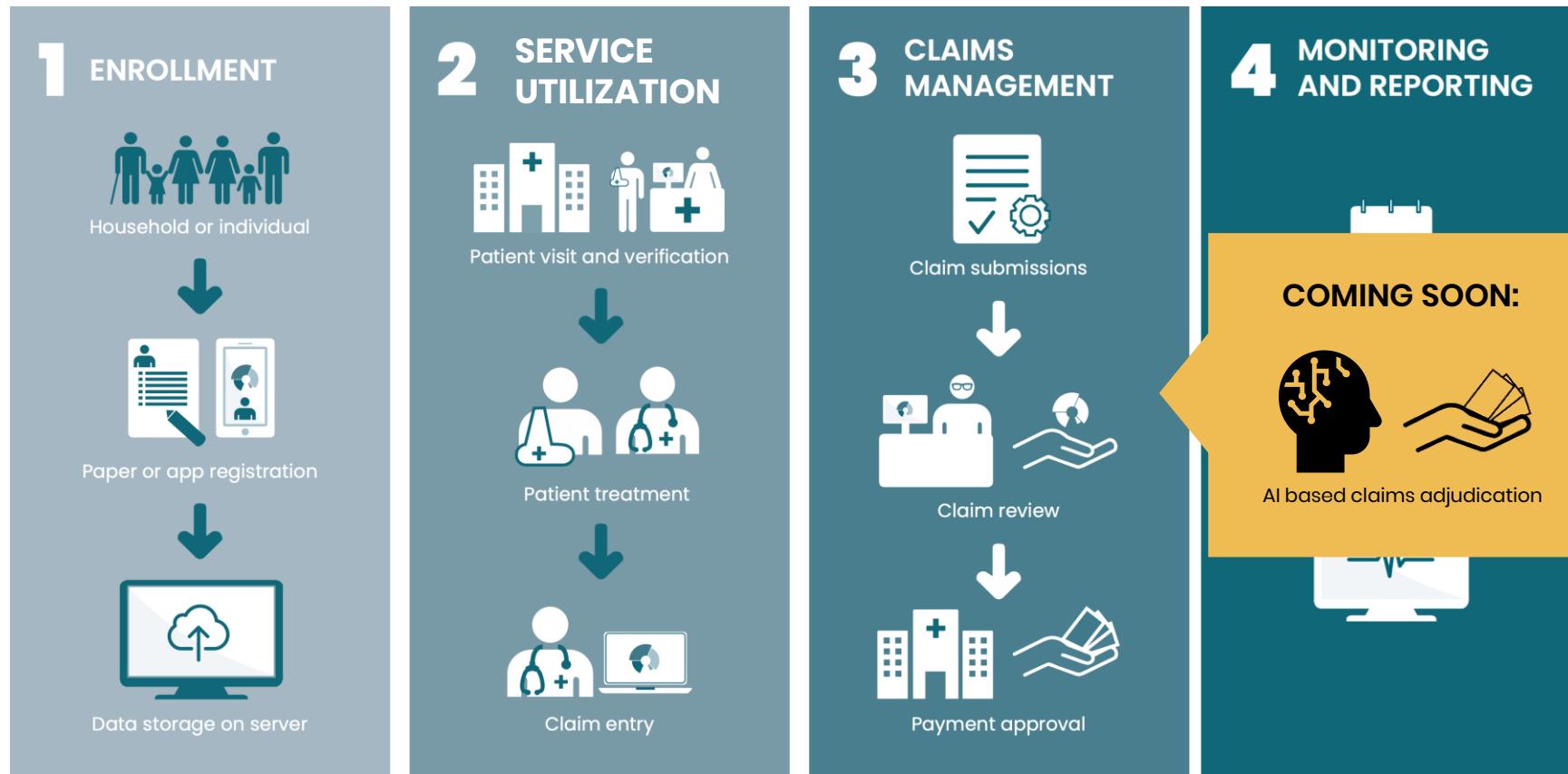
The history



Where is openIMIS used?



openIMIS Workflows for health financing



openIMIS as a Global Good

Open Source !

COPYRIGHT

- (c) 2016–2018 Swiss Agency for Development and Cooperation (SDC)

LICENCE

- GNU AGPL v3 License as published by the Free Software Foundation
- Free to use, modify, and redistribute (also freely)

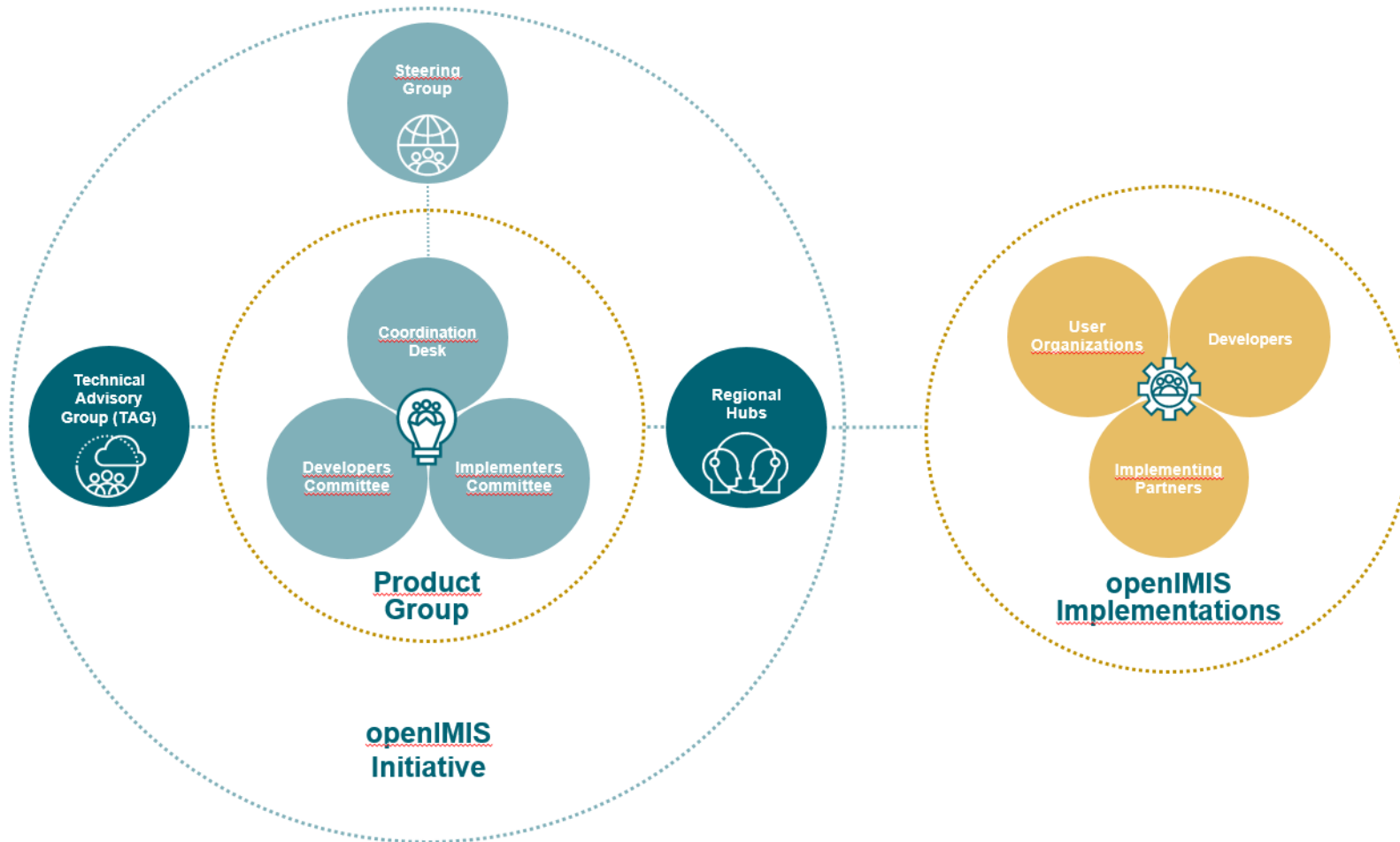
Alignment with global principles



Principles *for*
Digital Development



Governance Structure



Coordination Desk

- Hosted at GIZ's Global Initiative Social Protection Innovation and Learning
- Coordinate the implementers' and developers' committees
- Maintain wiki, and other collaboration tools
- Manage new software development
- Promote the use and further development of openIMIS

- Implementation support
 - Feasibility
 - Requirements definition
 - **Support to implementation via Implementation Fund**
- Capacity development
 - Through regional hubs in Asia and Africa
 - Structured trainings + ad-hoc support

Use case examples

Community Health Funds in Tanzania

- First user of openIMIS (2012)
- Community health fund (CHF) is health insurance scheme established in 2001, improved to CHF Iliyoboreshwa in 2018.
- Managed by President's Office – Regional Administration and Local Government (PORALG); which is accessible in all regions in Mainland Tanzania
- Regional pooling of funds
- Integrated with electronic national payment gateways

National Health Insurance in Nepal

- Using openIMIS since 2016
- National Social Health Insurance Scheme for various levels of health care
- Managed by the Health Insurance Board (HIB) Nepal, accessible in 95% of Nepal
- National pooling of funds
- Integrated with electronic medical record systems (e.g. Bahmni)

Health Insurance in Cameroon

- openIMIS user since 2013
- Micro health insurance scheme
- Managed by Bamenda Ecclesiastical Province Health Association (BEPHA) and available in Northwest region of Cameroon
- Regional pool

- Cloud hosted solution
- Additional schemes in Cameroon being explored for openIMIS implementation

More information on openIMIS

Signup for our newsletter at
www.openIMIS.org

openIMIS wiki: wiki.openIMIS.org

Source code: github.com/openimis

Technical documentation: docs.openIMIS.org

THANK YOU !

www.openIMIS.org

 @openIMIS