

openIMIS

Gumzo ya Mwezi 02/11/2020



**Bluesquare**



# Agenda

- Bluesquare:
  - who we are
  - our engagement towards openIMIS community
  - our methodology
- Achieved
  - what we delivered this month
- Roadmap
  - what we will deliver and what are our dependencies





**BLUESQUARE**

[www.bluesquarehub.com](http://www.bluesquarehub.com)

Delivering  
innovative  
technology for  
better lives.

Fall 2018 —

# what we do

## COUNTRY LEVEL DATA SYSTEMS 24 COUNTRIES

We build technologies that enhance governmental health data systems with a focus on three markets:

### **HEALTH FINANCING DATA SYSTEMS**

- Data systems for purchasers, health insurance, Ministries of Health
- Example: Develop a Pay for Performance data system in Kyrgyz hospitals

### **GOVERNMENT HEALTH DATA WAREHOUSES**

- Example: The health data warehouse in Morocco

### **DISEASE OR THEMATIC DATA SYSTEMS**

- Diabetes
- HIV
- Tuberculosis
- Malaria
- Immunization systems
- Vector Borne eradication systems (i.e. sleeping sickness)
- Family Planning
- Emergency Obstetric Care

Bluesquare develops these data systems based on a suite of in-house software products connected to DHIS2 a popular open source data management platform used by over 40 governments.

# How we do IT products and data services

We deliver technologies and services that strengthen governmental health data systems, mainly:

## **Hesabu (aka ORBF)**

- An open sourced rule engine that allows complex calculations in DHIS2, a popular open source data management platform. This is particularly useful for health financing data systems.

## **Data Viz**

- A public web dashboard that allows showcasing results.

## **Modeling and data science**

- Statistical analysis, Data cleaning, Modeling & machine learning and analysis automation to help customers bring value out of their health data.

Bluesquare suite of in-house software products and services allow collecting, computing, analyzing and visualizing data in a intelligent and friendly manner.

A world map with a light blue background. Twenty-four countries are highlighted in white, including the United States, Canada, Mexico, Brazil, Argentina, Chile, Peru, Colombia, Venezuela, Ecuador, Guyana, Suriname, French Guiana, the United Kingdom, France, Germany, Italy, Spain, Portugal, Greece, Turkey, India, China, Japan, South Korea, North Korea, and the Philippines. The text '24 COUNTRIES' is overlaid on the map.

24

COUNTRIES

## **Bluesquare:** our engagement towards openIMIS community

We believe that health insurance will be at the heart of the UHC agenda in many countries.

openIMIS modular transformation is an opportunity to develop code that can be used at scale to help provide health services “for the global good” (i.e. exact DNA of Bluesquare).

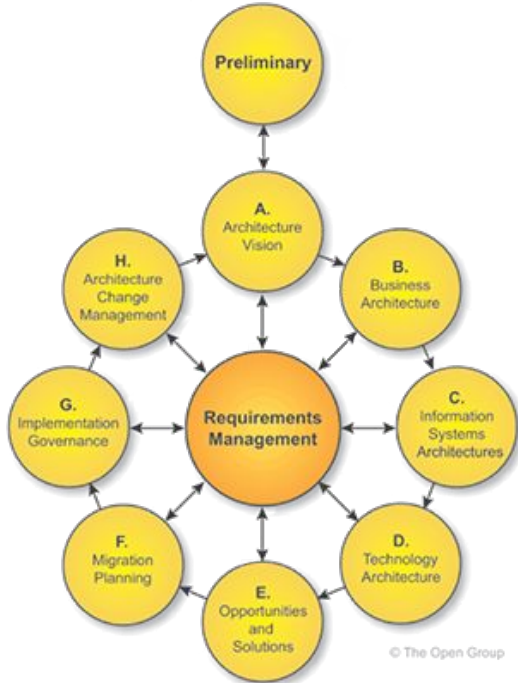
Creating synergies with our existing and future health-financing portfolio, promoting the tool in the countries where we operate.



# Bluesquare: our methodology

Our approach to deliver the openMIS modules borrows several concepts from TOGAF, most important one being the ADM (Architecture Development Method):

- Iterative, ensuring pragmatism and responsiveness in delivered solution
- We strive to keep things simple: we aim to use the TOGAF framework as a guide not a rule book. Where we feel it will serve this project we will make use of it. However, our proposed approach is much lighter than a traditional TOGAF implementation effort.
- It helps any community member to find/contribute to the appropriate part of the system.





# Bluesquare team

Xavier Gillmann Lead frontend dev

Eric Darchis Lead backend dev

Christine Verstraete Health Financing Lead PM

Laure Pontis PM

Change requests => Jira: [openIMIS Jira, project "OMT"](#)

General discussion and exchanges => [openimis-implementers-committee@googlegroups.com](mailto:openimis-implementers-committee@googlegroups.com)  
[openimis-developers-committee@googlegroups.com](mailto:openimis-developers-committee@googlegroups.com)

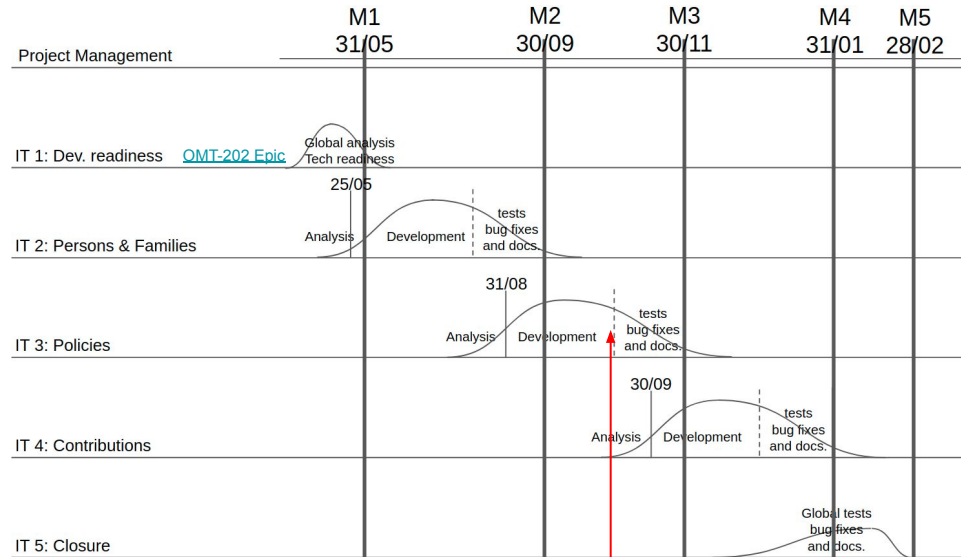
Feedback on mocks/testing => [Wiki https://openimis.atlassian.net/wiki/home](https://openimis.atlassian.net/wiki/home)

All other => PM (Christine and Laure) [cverstraete@bluesquarehub.com](mailto:cverstraete@bluesquarehub.com) [lpontis@bluesquarehub.com](mailto:lpontis@bluesquarehub.com)



# Notice D. (RFA-2019016): Beneficiary enrollment

- **Scope:** migration 'as is' of persons & families, policies and contributions
- **Timeframe:** 9 months (mid May 2020 - mid Feb 2021)
- **Methodology:** continuation of claim and locations & HF's migration



We are here



# Iteration 1: Dev. readiness

**Closed iteration with 4.5 m/d (22%!) over budget**  
(project 'closure' IT-5 contingency)

**CLOSED 31/05/2020**

## 05/2020 : 10.5 m/d - Epic: [OMT-202](#)

- "Permalink" hack resolution ([OMT-193](#)) - thanks M...
  - LGTM corrections (visible in PR develop > m...)
  - Claim & Locations maintenance - ...
- Note:
- In review: claim process...
  - Still open: 'account...
- Support other team...
  - Participated to for...
  - ... about (MS-SQL) ... extensibility mechanism... for claim... IT-2



FA-2019-016 - No Architecture vision change

- 05/2020 : Beneficiary Enrollment global analysis (JLN mapping,...) - **3 m/d**

Notes:

- screen presented to implementers 27/05
- thanks Patrick for feedbacks

## 05/2020 : Technical Upgrades - 11 m/d

Backend

- django 3
- ~~report bro~~ (1.4 not yet compatible with Windows platform)
- ...

Frontend

- React 16.13,
- Material-UI 4.9
- Babel,...



# Iteration 2: Persons & Families

## 08-09/2020: TESTING:

- Testing plan
- Aehin testing support
- Nepal testing
- Feedback from implementers
- Feedback from developers

06/2020: 3.5 m/d (started Insurees & families)

07/2020: 16.5 m/d (mocks feedbacks, I&F - req)

08/2020: 9 m/d

- Insurees & Families mutations (writing tests, testing)
- Coordination meetings
- Support other teams
- intermediary iterations

09/2020 :

- Testing and debugging
- Documentation

10/2020 :

- Documentation

## TODO Bluesquare Epic OMT-188

- Finalize documentation (readthedocs,...)
- **Limited** Claim & Locations maintenance
- Support other teams

08/2020: Analysis & Screen mocks: 2 m/d

06/2020: Analysis finalization 1 m/d

06/2020 : Scheduled tasks & JSON extensibility: 2 m/d



**CLOSED 08/10/2020**

# Iteration 3: Policies

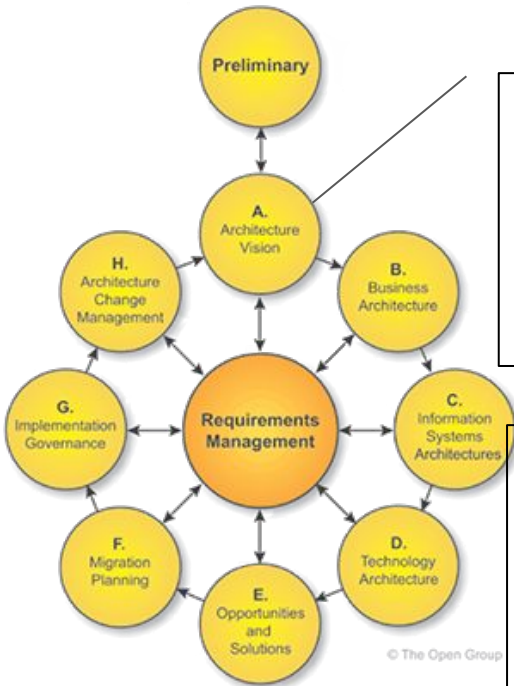
## 10/2020: TESTING

10/2020

- Coordination meetings
- Support other teams
- Feedback on developments

## Upcoming:

- Documentation
  - Readthedocs, ...
  - Testing report
  - Iteration report
- Contributions analysis



08/2020:

Detailed analysis:

- Screen mocks
- Additional policy status

09/2020

Feedback on analysis

09/2020 : Development based on mocks

10/2020 : Development

- Policy screens
- Create new policies + Calculation rules:

<https://openimis.atlassian.net/wiki/spaces/OP/pages/1838612485/Policy+Values+Calculations>

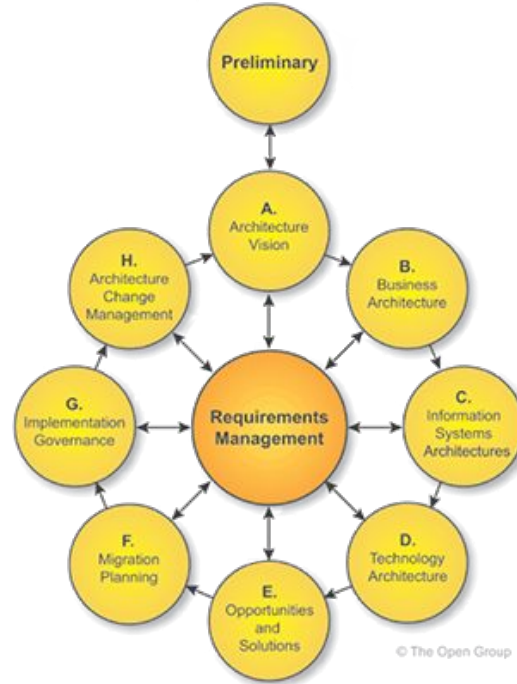
- Delete Policy
- Renew policy + Calculation rules:

<https://openimis.atlassian.net/wiki/spaces/OP/pages/1849163809/Policy+Renewal+Values+Calculations>

- Suspend Policy



# Iteration 4: Contributions



# Developers training videos

**Developers videos are now all available** on the

[Developer starting kit page](#) in the Wiki

**WORKSHOP on November 19th from 10am to 12 Brussels time**

**It is mandatory that participants view all videos before the workshop so as to keep the discussion beyond the videos content**

**Please submit questions beforehand** and asap through the comments on the [Developer starting kit](#) wiki page

**Sign up** for the workshop by filling out this [Doodle](#)

