

openIMIS

Gumzo ya Mwezi 06/07/2020



Bluesquare



Agenda

- Bluesquare:
 - who we are
 - our engagement towards openIMIS community
 - our methodology
- Achieved
 - what we delivered this month
- Roadmap
 - what we will deliver and what are our dependencies





BLUESQUARE

www.bluesquarehub.com

Delivering
innovative
technology for
better lives.

Fall 2018 —

what we do

COUNTRY LEVEL DATA SYSTEMS 24 COUNTRIES

We build technologies that enhance governmental health data systems with a focus on three markets:

HEALTH FINANCING DATA SYSTEMS

- Data systems for purchasers, health insurance, Ministries of Health
- Example: Develop a Pay for Performance data system in Kyrgyz hospitals

GOVERNMENT HEALTH DATA WAREHOUSES

- Example: The health data warehouse in Morocco

DISEASE OR THEMATIC DATA SYSTEMS

- Diabetes
- HIV
- Tuberculosis
- Malaria
- Immunization systems
- Vector Borne eradication systems (i.e. sleeping sickness)
- Family Planning
- Emergency Obstetric Care

Bluesquare develops these data systems based on a suite of in-house software products connected to DHIS2 a popular open source data management platform used by over 40 governments.

How we do IT products and data services

We deliver technologies and services that strengthen governmental health data systems, mainly:

Hesabu (aka ORBF)

- An open sourced rule engine that allows complex calculations in DHIS2, a popular open source data management platform. This is particularly useful for health financing data systems.

Data Viz

- A public web dashboard that allows showcasing results.

Modeling and data science

- Statistical analysis, Data cleaning, Modeling & machine learning and analysis automation to help customers bring value out of their health data.

Bluesquare suite of in-house software products and services allow collecting, computing, analyzing and visualizing data in a intelligent and friendly manner.



24

COUNTRIES

Bluesquare: our engagement towards openIMIS community

We believe that health insurance will be at the heart of the UHC agenda in many countries.

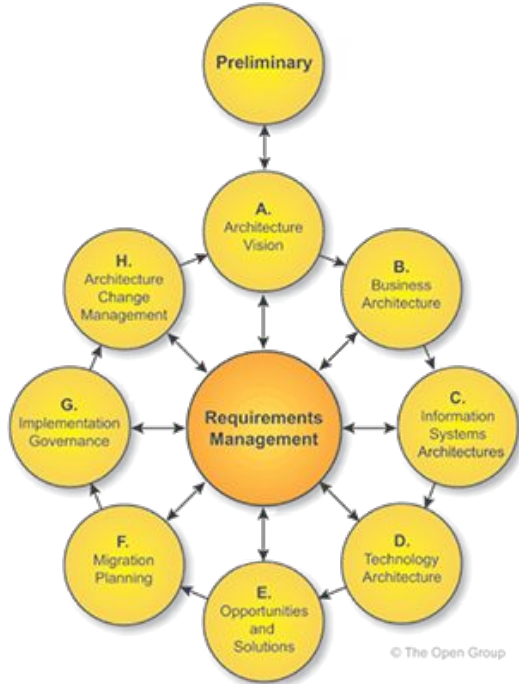
openIMIS modular transformation is an opportunity to develop code that can be used at scale to help provide health services “for the global good” (i.e. exact DNA of Bluesquare).

Creating synergies with our existing and future health-financing portfolio, promoting the tool in the countries where we operate.



Bluesquare: our methodology

Our approach to deliver the openMIS modules borrows several concepts from TOGAF, most important one being the ADM (Architecture Development Method):



- Iterative, ensuring pragmatism and responsiveness in delivered solution
- We strive to keep things simple: we aim to use the TOGAF framework as a guide not a rule book. Where we feel it will serve this project we will make use of it. However, our proposed approach is much lighter than a traditional TOGAF implementation effort.
- It helps any community member to find/contribute to the appropriate part of the system.



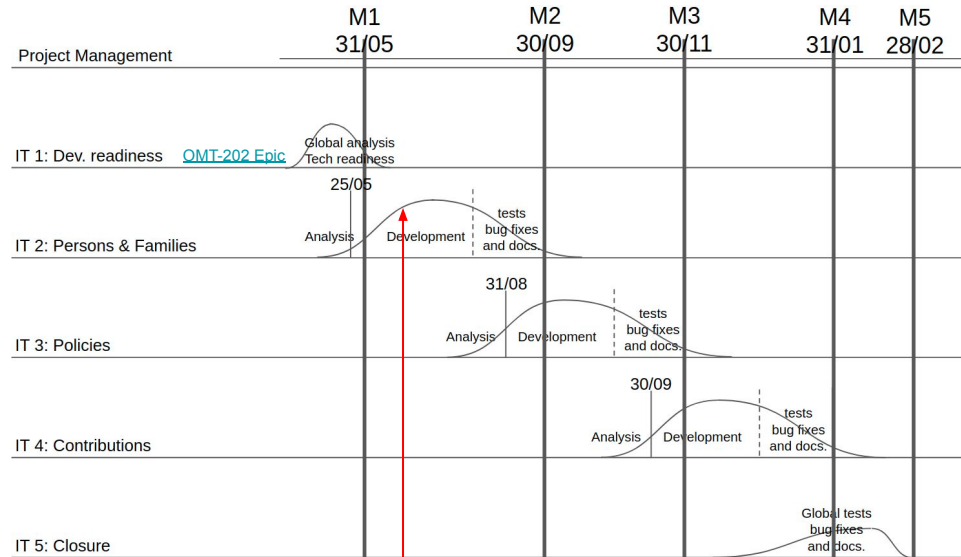
Agenda

- Bluesquare:
 - who we are
 - our engagement towards openIMIS community
 - our methodology
- Achieved
 - what we delivered this month
- Roadmap
 - what we will deliver and what are our dependencies



Notice D. (RFA-2019016): Beneficiary enrollment

- **Scope**: migration 'as is' of persons & families, policies and contributions
- **Timeframe**: 9 months (mid May 2020 - mid Feb 2021)
- **Methodology**: continuation of claim and locations & HF's migration



We are here

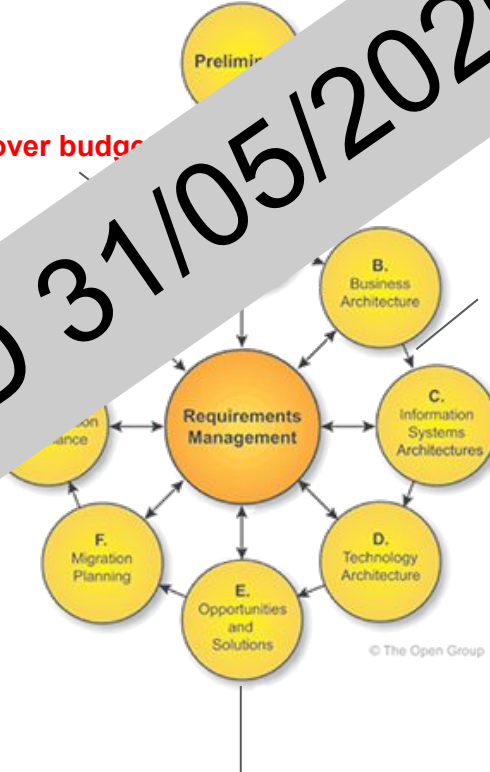
Iteration 1: Dev. readiness

Closed iteration with 4.5 m/d (22%!) over budget
(project 'closure' IT-5 contingency)

CLOSED 31/05/2020

05/2020 : 10.5 m/d - Epic: [OMT-202](#)

- “Permalink” hack resolution ([OMT-193](#)) - thanks M...
 - LGTM corrections (visible in PR develop > m...)
 - Claim & Locations maintenance - ...
- Note:
- In review: claim process...
 - Still open: ‘account...
- Support other team...
 - Participated to for...
 - ... about (MS-SQL) ... extensibility mechanism... for claim... IT-2



FA-2019-016 - No Architecture vision change

- 05/2020 : Beneficiary Enrollment global analysis (JLN mapping,...) - **3 m/d**

Notes:

- screen presented to implementers 27/05
- thanks Patrick for feedbacks

05/2020 : Technical Upgrades - 11 m/d

Backend

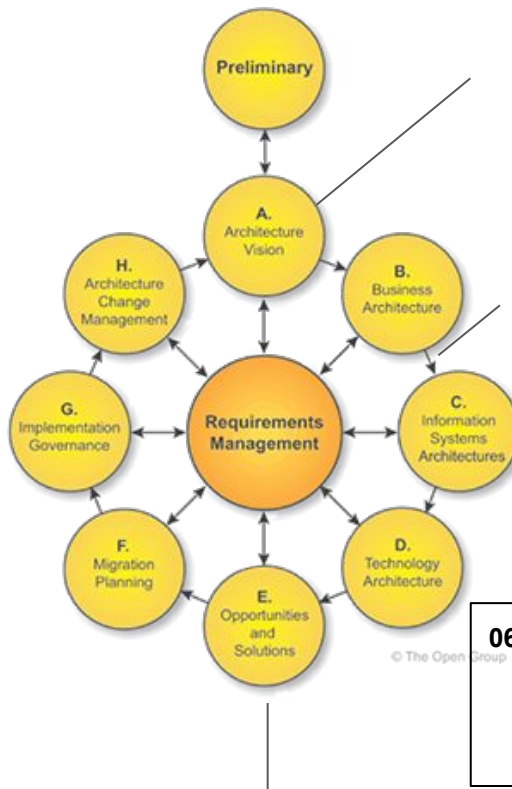
- django 3
- ~~report bro~~ (1.4 not yet compatible with Windows platform)
- ...

Frontend

- React 16.13,
- Material-UI 4.9
- Babel,...

Iteration 2: Persons & Families

Iteration 2:  2 + 10.5 = 12.5 m/d 50 m/d



05/2020: Analysis & Screen mocks: **2 m/d**
06/2020: Analysis follow-up, screen feedback gathered,... **1 m/d**

06/2020: 3.5 m/d

- Started Insurees & Families implementation
- Coordination meetings
- Support other teams

TODO Bluesquare 07-09/2020 : Epic [OMT-188](#)

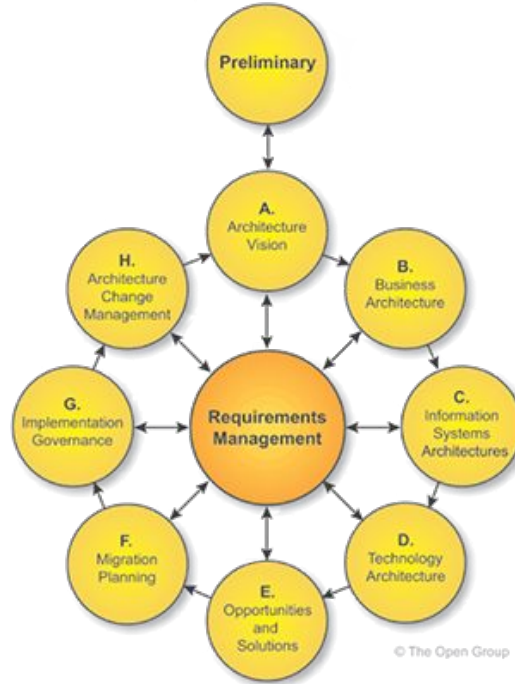
- Frontend (Screens implementation)
- **Limited Claim & Locations maintenance**
(opened tickets: [OMT-143](#), [OMT-200](#) & [OMT-226](#))
- Support other teams

06/2020 :

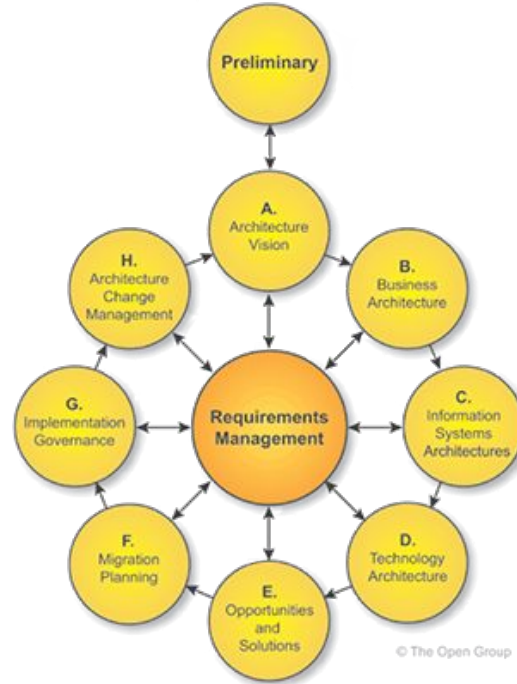
- Batch platform: **4 m/d**
- JSON extensibility (backported on claim): **2 m/d**



Iteration 3: Policies



Iteration 4: Contributions





Iteration 5 - Project closure

