

HEALTH  
insurance



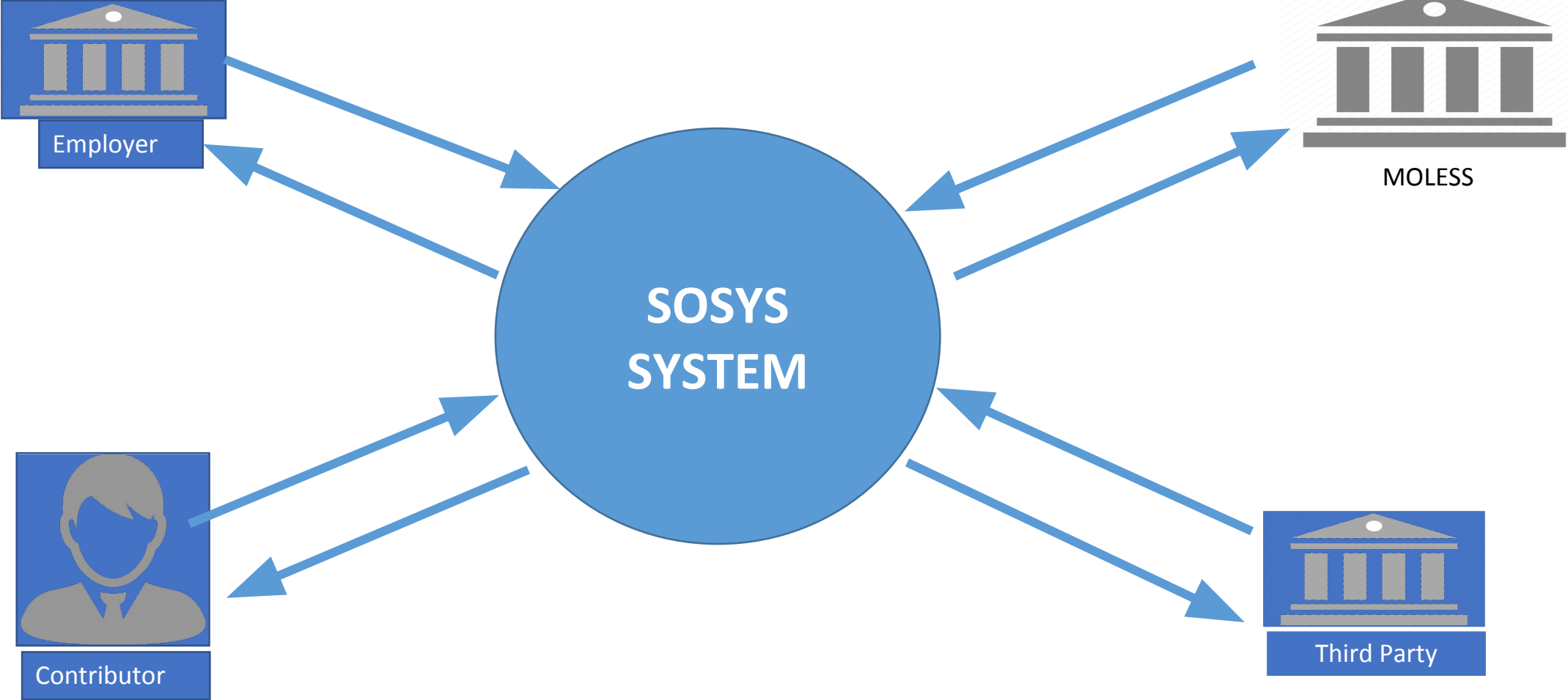
Accessible, Quality healthcare in Africa

Quality and Accessible Healthcare for all in Kenya and Africa as a whole

# Claims Management

- Application for benefits entails submitting an application form in the office of the fund or any representative authorized by the funds.
- Claim applications include:
  - Medical treatment, health and maternity protection scheme
  - Accident and disability protection scheme
  - Dependent family protection scheme
  - Old age protection scheme (pension, dependent family pension, gratuity, family pension)
- Claim forms are submitted by insuree and hospital

# Current Systems Context overview



# SOSYS and OpenIMIS Task Management

SOSYS/NHIF/Tz NHIF



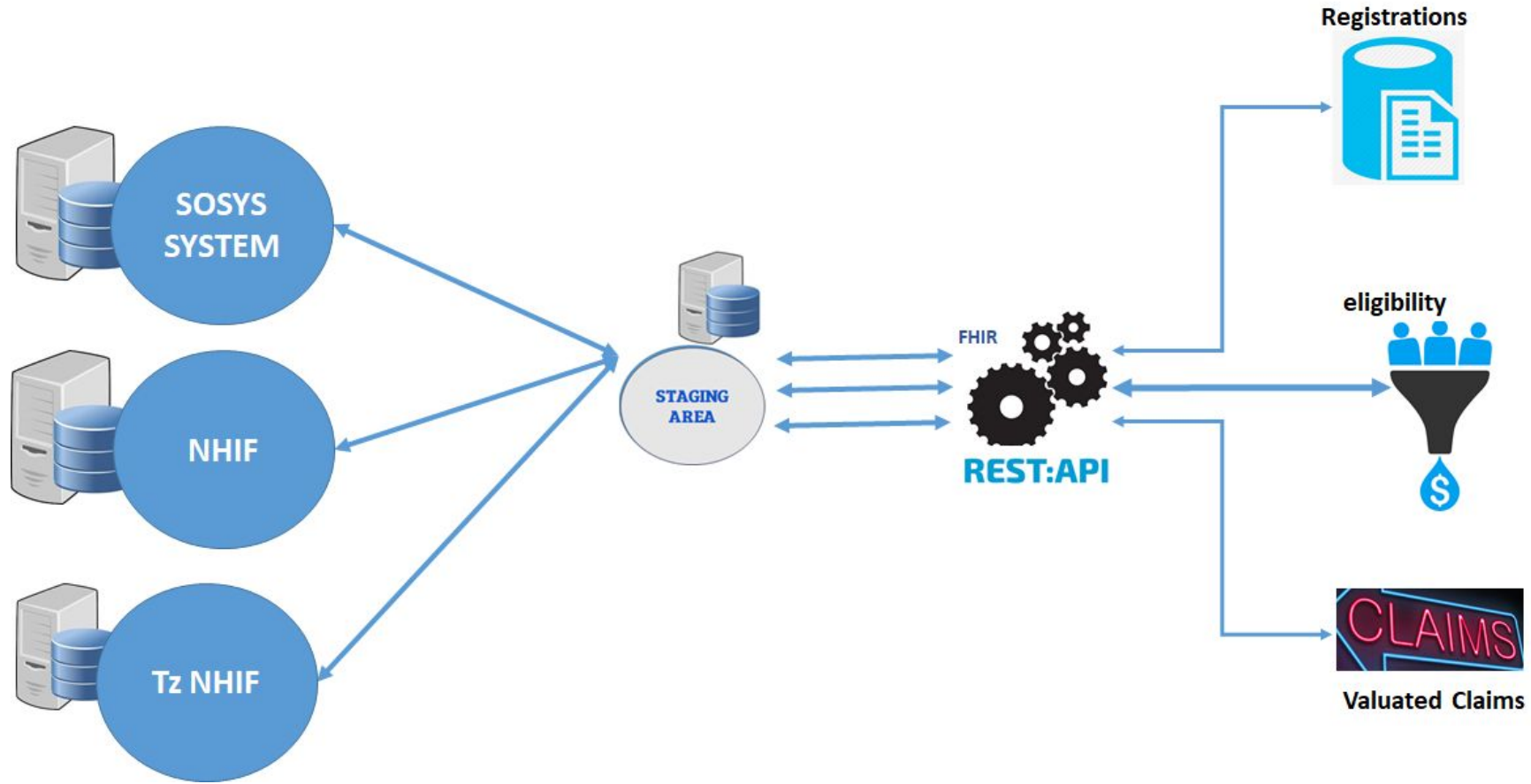
- Employer/Company Registration
- Employee & Families
- Payment Contributions
- Policy Management
- Eligibility Management
- Valuated Claims
- Claims Payment Notifications

- Payer Registration
- Employer Creation
- Product Creation - Scheme & Plans
- Employee & Family creation
- Employee Balances
- Medical Benefit History
- Provider Network Management

- **Claims Management**
- Valuated Claims (Currently Reports)

- Eligibility Management

# Standard Architecture



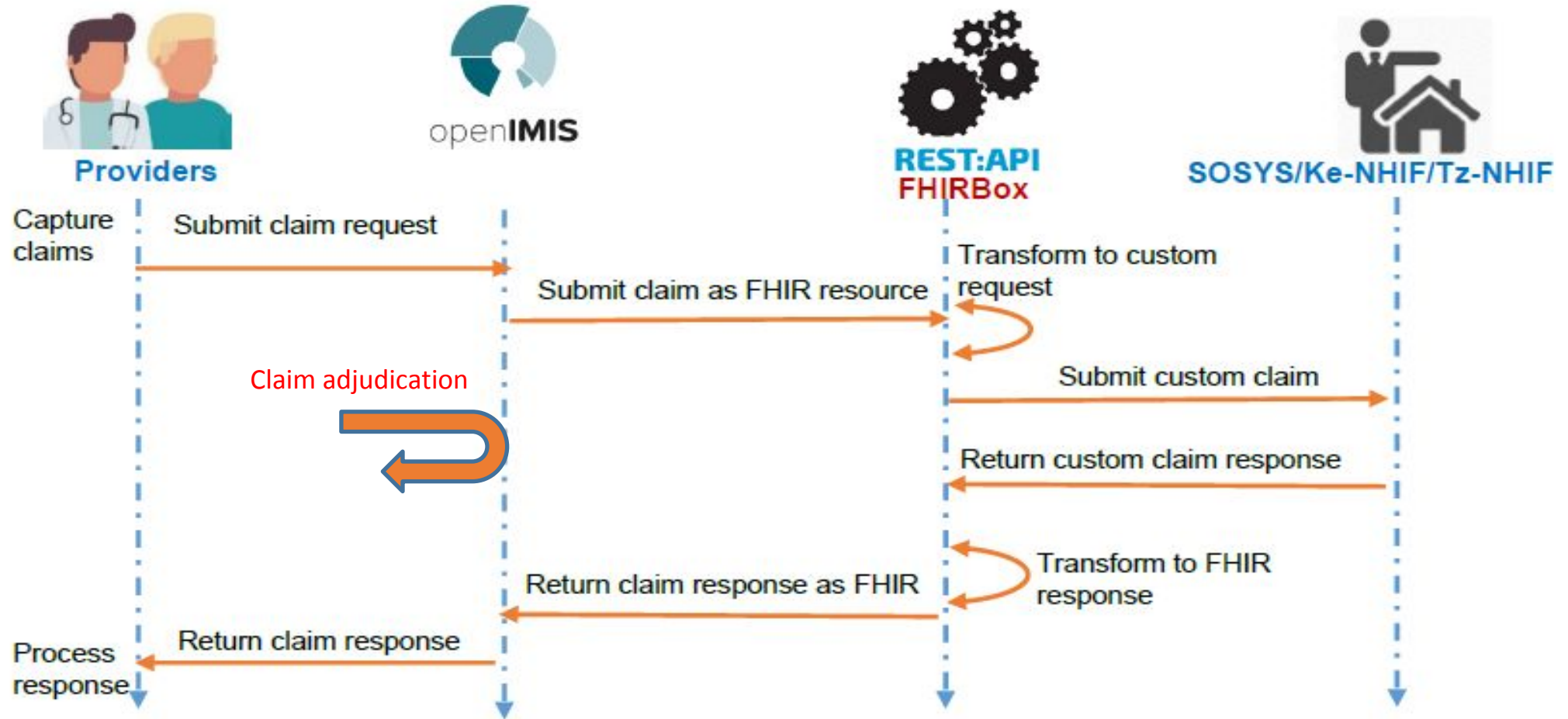


## Standard Interface - HealthixFHIRBox Broker

- The standard interface (HealthixFHIRBox) is a Broker that uses REST API to integrate growing number of data sources, systems, devices, facilities and organizations
- The purpose of the HealthixFHIRBox Staging Area is to resolve semantic and syntactic differences from received code systems (SNOMED, LOINC) and metadata before transforming the resource into FHIR

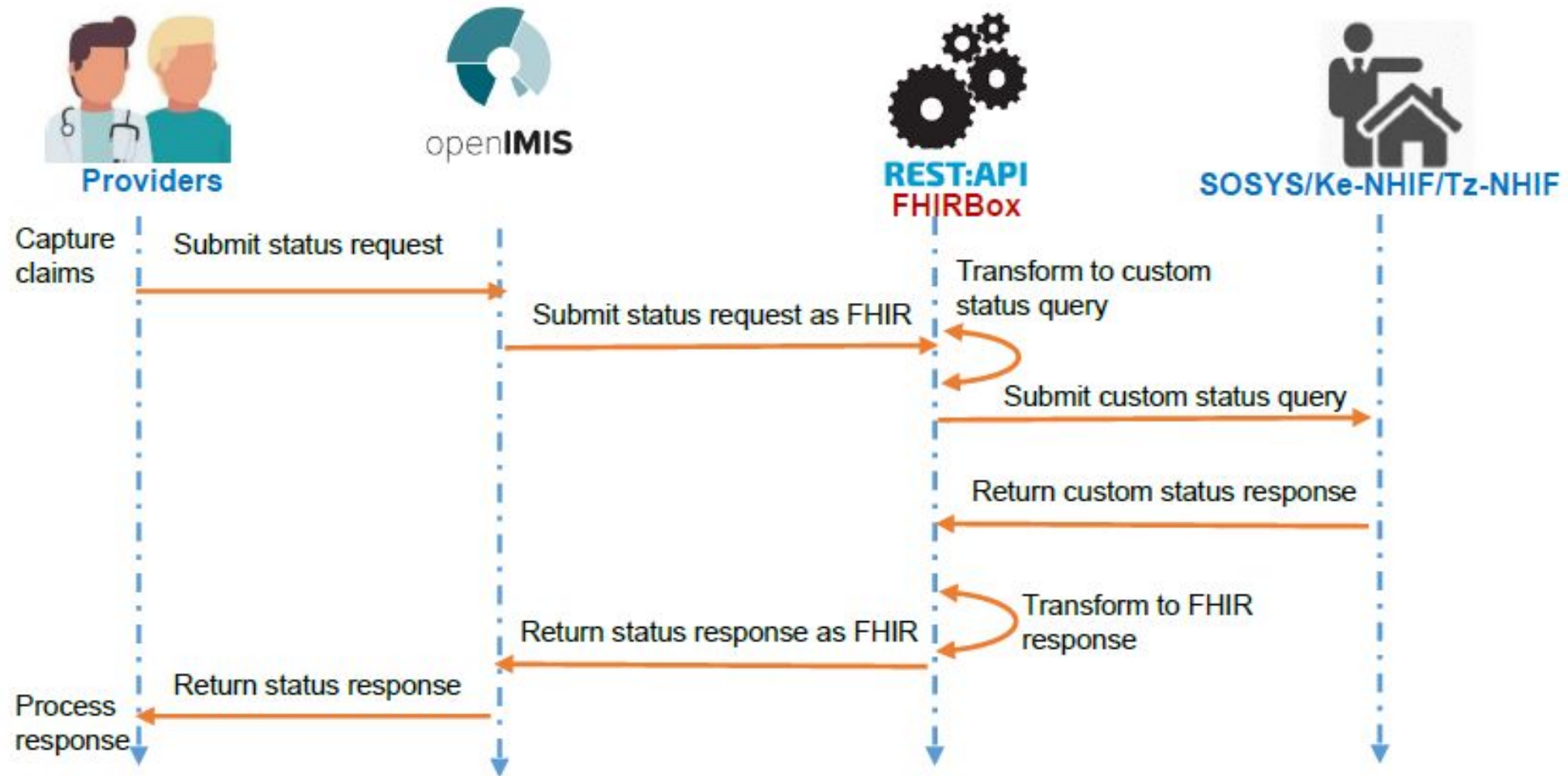
# Submit Claim API

## SUBMIT CLAIM



# Track Claim Status API

## TRACK CLAIM STATUS

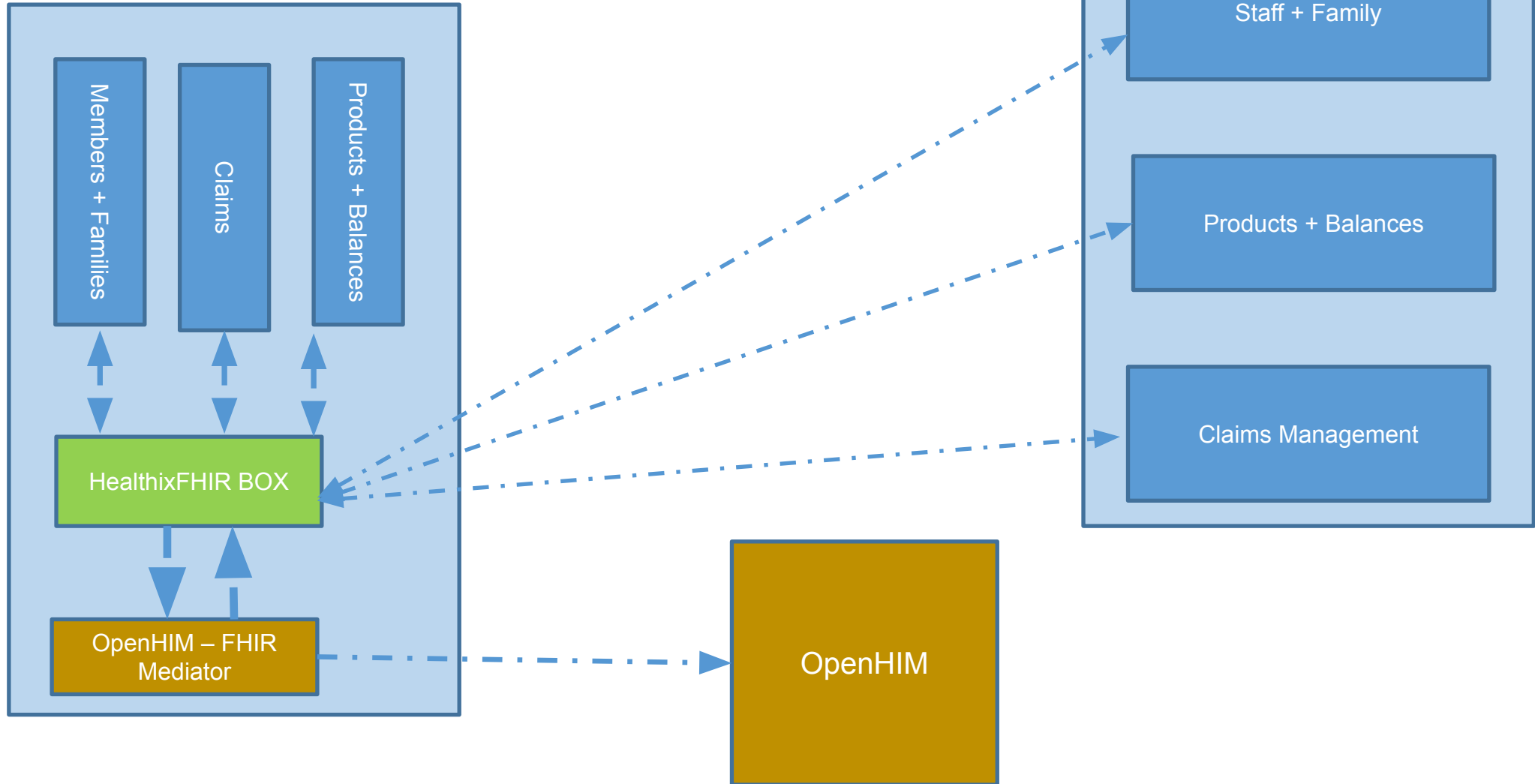




# OpenHIM proposal



openIMIS



HEALTHIX CLAIMS MANAGEMENT APIS

Thank You  
Questions?